

Part List

Bill of Materials for Project [ATB ESP32 CAM rev2.PrjPcb] (No PCB)

Source Data From:

ATB ESP32 CAM rev2.PrjPcb

Project:

ATB ESP32 CAM rev2.PrjPcb

Variant:

None

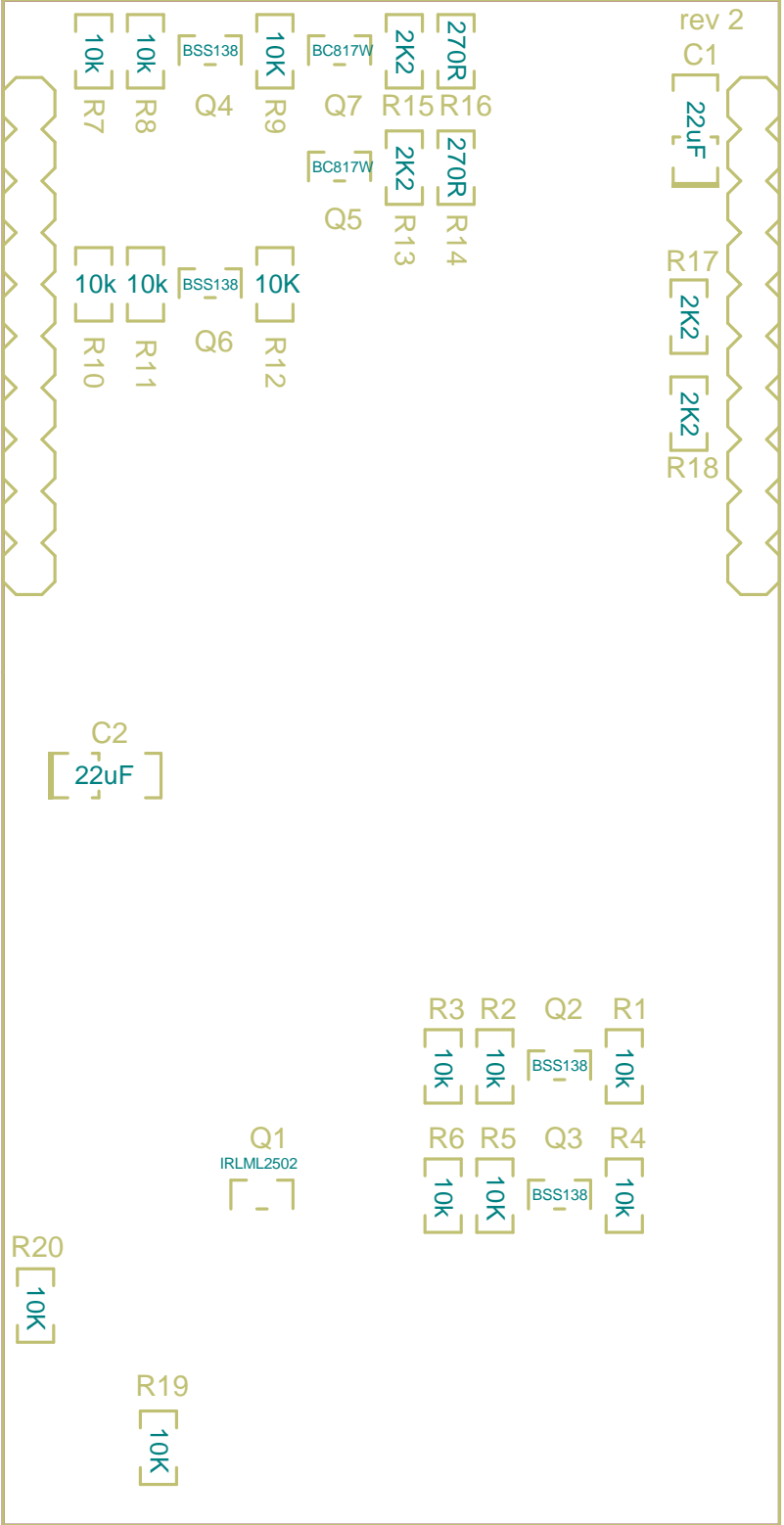
Report Date: 10.11.2021

19:38

Print Date: 10-Nov-21

7:38:52 PM

Designator	Comment	LibRef	Footprint	Description
C1, C2	22uF	Cap_Pol	TANC_A	Capacitor Polarized
CON1	TX	Header 2	MA02-1	Header, 2-Pin
CON2	FT232_UART	Header 2	MA02-1	Header, 2-Pin
CON3	FT232_PROG	Header 2	MA02-1	Header, 2-Pin
CON4	RX	Header 2	MA02-1	Header, 2-Pin
D1	PROG	LED_BLUE	LED0603	LED
D2	uC	LED_GREEN	LED0603	LED
J1, J2	Header 8X2	Header 8X2	MA08-2	Header, 8-Pin, Dual row
J3	ESP32_RST	Header 2H	MA02-1H	Header, 2-Pin, Right Angle
JP1	RST_OPT	Header 3	MA03-1	Header, 3-Pin
JP2	IO0_SCL	Header 2	MA02-1	Header, 2-Pin
JP3	IO16_SDA	Header 2	MA02-1	Header, 2-Pin
JP4	RST_OPT1	Header 3	MA03-1	Header, 3-Pin
LOG1	ATNEL	ATNEL_LOGO	LOGO_453.6X136.8	
M1	ATB-MICROPORT v1.05a	ATB-MICROPORT_v1.05a	ATNEL-IO_BRD_v1.05a	ver 1.05a
Q1	IRLML2502(GSD)	IRLML2502(GSD)	SOT23	N-MOSFET
Q2, Q3, Q4, Q6	BSS138	BSS138(GSD)	SOT23	N-MOSFET
Q5, Q7	BC817W	BC817W(BEC)	SOT23	NPN
R1, R2, R3, R4, R5, R6, R7, R8, R9, R10, R11, R12, R19, R20	10k	Res	R0603	Resistor
R13, R15, R17, R18	2K2	Res	R0603	Resistor
R14, R16	270R	Res	R0603	Resistor
S1, S2	MSS-2235	MSS-2235	MSS-2235	
SW1	RST	Micro-Sw itch	Tactsw itch	
SW2	FLASH	Micro-Sw itch	Tactsw itch	
U1	ESP32 CAM	ESP32 CAM	ESP32 CAM	



A

B

C

D

A

B

C

D

